

# Outdoor Dome Housing

**A-ODW7X**

2 = Type 24VAC Blower and heater installed  
 12 = Type 12VDC Blower and heater installed  
 12(POE) = Type 12VDC Blower, heater and PoE Splitter installed in housing \*1, \*2  
 12(POE+M) = Type 12VDC Blower, heater and PoE Splitter installed in housing and Midspan are packed in product box. \*1, \*2

**Mounting Bracket**  
 Nothing = W type (Wall Mount)  
 A = Type A Bracket (Wall Mount)  
 B = Type B Bracket (Ceiling Mount)  
 C = Type C Bracket (Ceiling Mount)  
 D = Type D Bracket (Ceiling Mount w/o 1 1/2" NPT Pipe)  
 E = Type E Bracket (Ceiling Mount w/o 1 1/2" NPT Pipe)

**Housing Color**  
 Nothing = Standard (Silver)  
 (OW) = Off-White  
 (DB) = Dark Brown

**Optional\* Two-Coat system for Metal Parts(Bracket) for corrosion protection\*3**  
 Nothing = Standard One Coat by UV resistant polyester powder coat  
 -TC = "Optional" Two-Coat  
 -TTC= Optional Three Coat\*4

**Capsule**  
 C = Clear  
 T = Tinted

6 digits registered model name(UL & PSE)      After 7 digits shows optional specifications

Specifications						
Model number	A-ODW7X** <input type="text"/>	A-ODW7X** <input type="text" value="A"/>	A-ODW7X** <input type="text" value="B"/>	A-ODW7X** <input type="text" value="C"/>	A-ODW7X** <input type="text" value="D"/>	A-ODW7X** <input type="text" value="E"/>
Mounting Bracket	Wall Mount W type	Wall Mount A type	Type-B Ceiling Mount	Type-C Ceiling Mount	Type-D Ceiling Mount	Type-E Ceiling Mount
Operating Environment	Outdoor					
Operating Temperature	-60°C(-76°F)~+45°C(113°F) (AC24V/DC12V 50W) -30°C(-22°F)~+45°C(113°F) (POE 60W) Note: It is subject to the specification of camera.					
IP Rate	IP55 (Vent Holes "Open") IP66 (Vent Holes "Closed" with provided Rubber)					
Max Wind Load	Products will not be destroyed by maximum 50m/sec (167 ft/sec) wind load. *Safety of 50m/sec (167 ft/sec) was confirmed by actual wind load test. *Safety of 60m/sec (200 ft/sec) was confirmed by our factory test data.					
Housing	Material = PC/ABS UL94 V-0      Standard Color : Silver (Housing Top = Aluminum)      Optional Color : <input type="text" value="OW"/> = Off-White (RAL9002 Similar) Optional Color : <input type="text" value="DB"/> = Dark Brown (Munsell 5YR2/1.5 Similar)  *Vandal Resistant M4 Screws x 7 pcs. & Tool Set Model A-VSM4TL is optional.					
Capsule	Material = PC UL 94 V-0 Light Loss : <input type="text" value="C"/> = Clear = Almost zero <input type="text" value="T"/> = Tinted = Approx. 60%					
Mounting Bracket	Material :      Aluminum=Standard Type-W & A Wall Mount, Type-C Ceiling Mount Steel = Type-B, D, E Ceiling Mount Color :      Standard Type-W & A Wall Mount= Black(When Housing Color is Silver) Type-B Ceiling Mount = Black/OW/DB based on Housing Color. Type-C Ceiling Mount = Sky-white Type-D & E Ceiling Mount =Off-white(RAL9002 Similar) Paint Method :   Powder Coat Finish *Two Coat(TC) Anti-corrosion paint is done for bracket.					
Weight	Approx. 5.0kgs (11.0 lbs)		Approx. 4.8kgs (10.6 lbs)			Approx. 3.9 kgs (8.6 lbs)
Recommended Screw	3/8" or M8~M10 Stainless Screws x 4 (Not included in product)					
Heater (Optional)	<input type="text" value="2"/> = 24VAC 25W <input type="text" value="12"/> = 12VDC 25W    Standard (Optional 6W/12W) <input type="text" value="12 (POE)"/> <input type="text" value="12 (POE+M)"/> = 12VDC Input 25W Standard (Optional 6W/12W) Optional extreme cold area -20°C (-4°F) ~ 60°C (-76°F) Standard 24VAC/12VDC 25W + Additional 24VAC/12VDC 25W = Total 24VAC/12VDC 50W Auto by thermostat 4.4°C (40°F) = ON    16°C (60°F) = OFF					
Blower (Optional)	<input type="text" value="2"/> = 24VAC Input <input type="text" value="12"/> = 12VDC Input <input type="text" value="12 (POE)"/> <input type="text" value="12 (POE+M)"/> = 12VDC Input Manufacturer : Nidec Servo Corporation Model EUDC12D8 DC12V 0.04A 0.5W x 2 units are installed for both 24VAC/12VDC blower type. Auto by thermostat 35°C (95°F) = ON    27°C (80°F) = OFF					
Fuse	125V 5A(Size 5.2 x 20mm) for 24VAC Blower & Heater(Extra 1 pc. is provided.) No fuse for 12VDC Blower & Heater.					
Standard & Compliance	RoHS, UL (File #E313815), CE, EAC, RCM					

\*1 Due to size and specification of camera splitter may not be installed in housing.

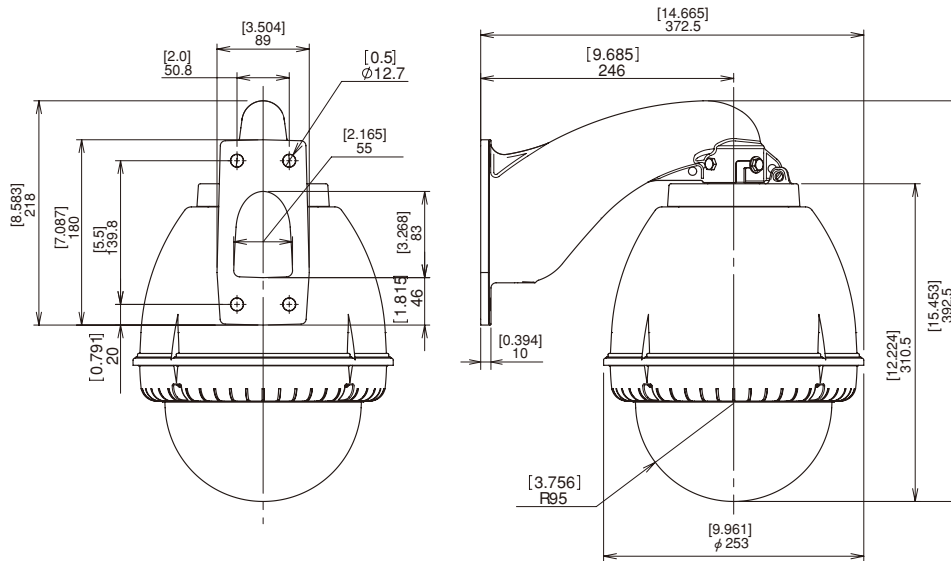
\*2 As regards the specification of both Splitter and Midspan, you are requested to obtain our confirmation in advance before ordering.

\*3 "Optional" Two-Coat system comprises 1coat = powder coating primer (Epoxy base) and Top coat = UV resistant (Polyester base) powder coating based on our standard.

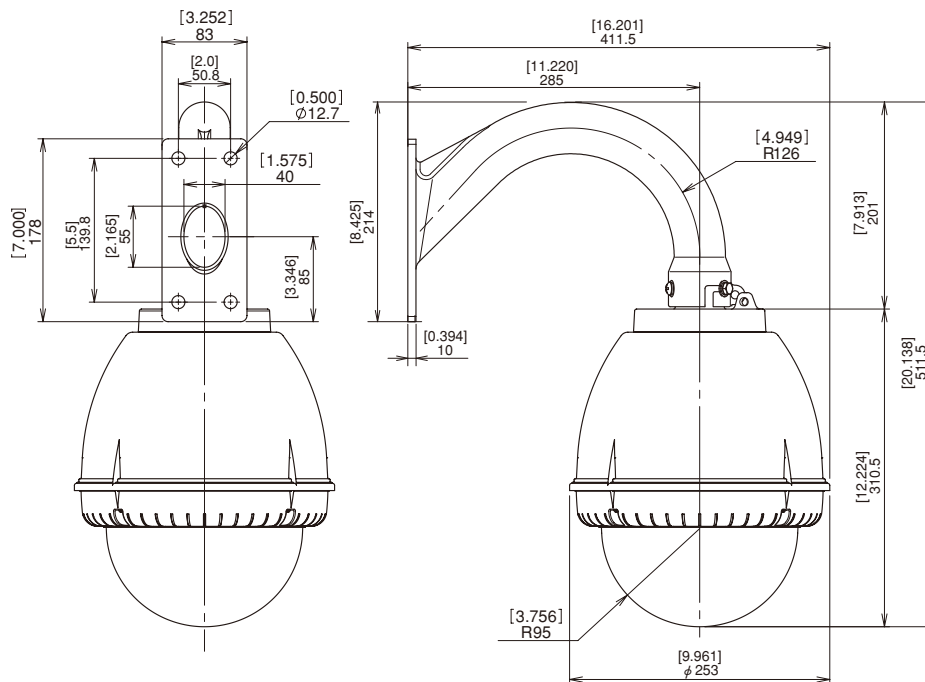
\*4 Before Two Coat(-TC), Cation Electrodeposition will be added. (For details, click our website top "Anti-Corrosion Paint" )

# Outdoor Dome Housing

## **A-ODW7X** (Standard Wall Mount W Type)

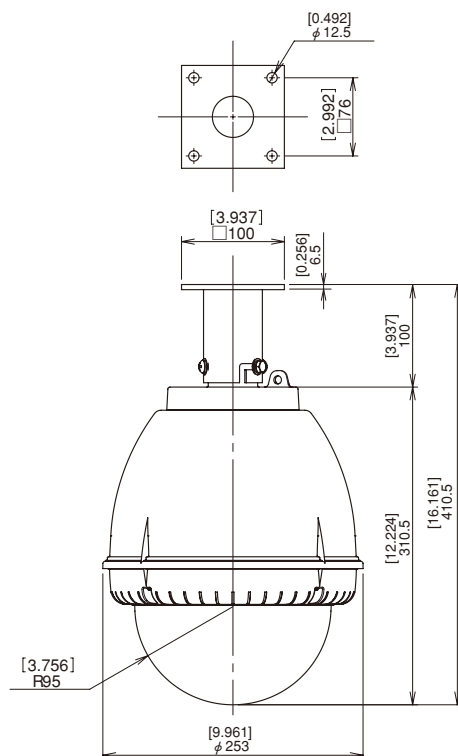


## **A-ODW7X** (Type A Wall Mount)

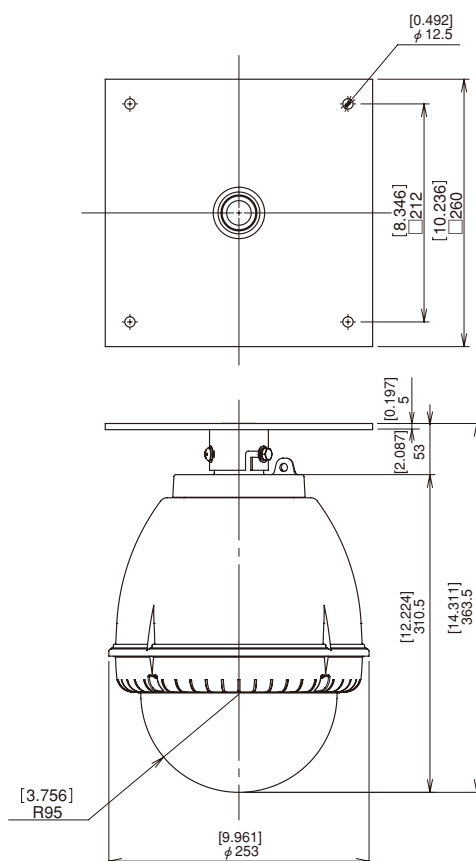


# Outdoor Dome Housing

## **A-ODW7X** (Type B Ceiling Mount)

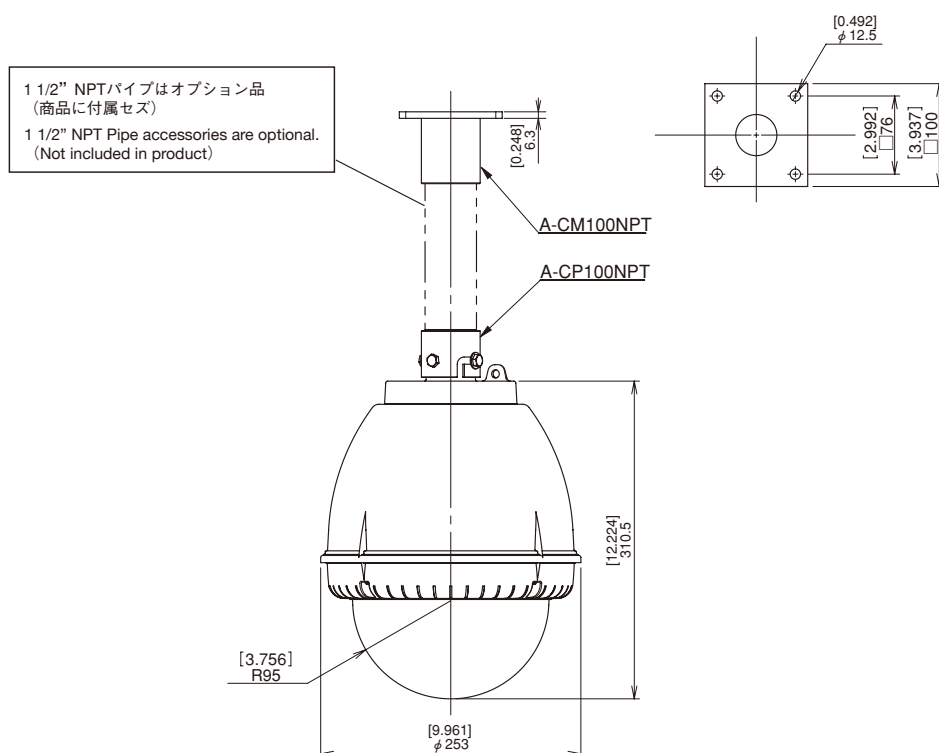


## **A-ODW7X** (Type C Ceiling Mount)



# Outdoor Dome Housing

## A-ODW7X (Type D Ceiling Mount)



## A-ODW7X (Type E Ceiling Mount)

